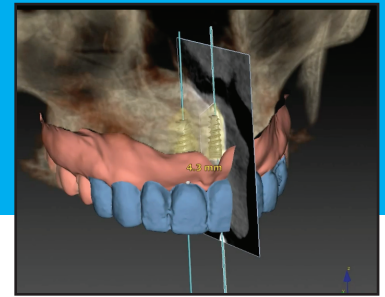


# Smart Fusion®

## NobelGuide - Guided Surgery



### Haupt Dental Lab Now Offers Seamless Guided Surgery Integration!

Using Smart Fusion, integration of the CBCT and working cast/diagnostic is 100% digital.

- There is no longer a need for a pre-CT radiographic guide
- Fixed pricing for 1-8 implants on partially edentulous cases
- Efficient, quick turn-a-round times for NobelGuides - guided surgery stents

### Bronze

**\$145**

- NobelClinician case planning
- Articulated Casts
- Diagnostic Waxup (1-3 units)\*  
\*\$20/Tooth each additional unit

### Silver

**\$425**

- NobelClinician case planning
- Articulated Casts
- Diagnostic Waxup (1-3 units)\*  
\*\$20/Tooth each additional unit
- NobelGuide (2mm Primary Drill Guide 1-8 implants)

### Gold

**\$525**

- NobelClinician case planning
- Articulated Casts
- Diagnostic Waxup (1-3 units)\*  
\*\$20/Tooth each additional unit
- NobelGuide (Fully Guided Surgery Stent 1-8 implants)
- \$100 Discount towards final Procera abutment\*  
\*Must be same patient as planning/guide

### Platinum

**\$695**

- NobelClinician case planning
- Articulated Casts
- Diagnostic Waxup (1-3 units)\*  
\*\$20/Tooth each additional unit
- NobelGuide (Fully Guided Surgery Stent 1-8 implants)
- Screw-Retained Provisional Restoration\*  
\*One Temporary Crown - Additional implant units \$175ea. (pontics \$65)
- \$100 Discount towards final Procera abutment\*  
\*Must be same patient as planning/guide

