



800-750-5004

HAUPT DENTAL LAB INC.

1220 E. Birch St. Suite 201, Brea, CA 92821

Custom Impression Coping Technique

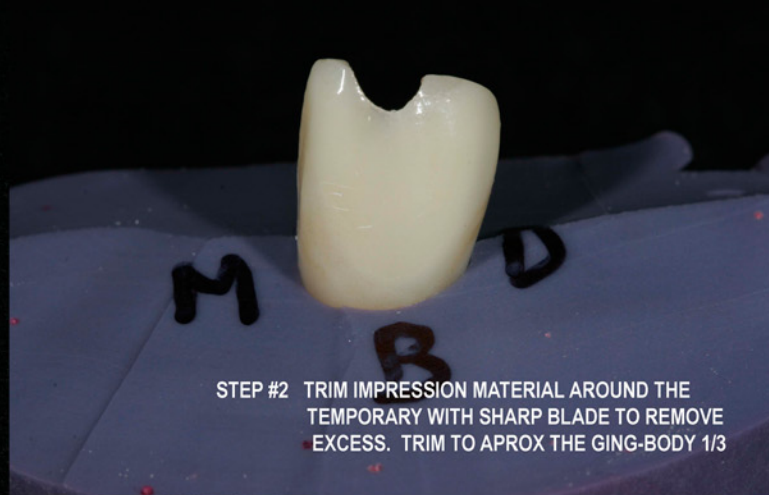
Steps

1. Unscrew temporary crown restoration.
2. Screw on an analog to the temporary crown restoration.
3. Seat the temporary crown with the analog attached into a small reservoir filled with mixed medium body polyvinyl siloxane impression material up close to the height of contour of the temporary.
4. Unscrew temporary crown from analog, which is still embedded in the impression material.
5. Screw on fixture level impression coping onto analog.
6. Pour DuraLay resin or light cure resin into the space created by the temporary. Do not fill resin material to the top. Filling approximately 60% full will prevent the resin from interfering with the adjacent teeth during seating of the impression coping.
7. Unscrew fixture level impression coping from the analog. The resin material should come out with the impression coping.
8. Screw impression coping onto the implant in the mouth. The purpose of the additive resin on the impression coping is to prevent the tissue, which was conditioned by the temporary crown, from collapsing into the space due to circumferential fibers contracting.
9. Drill an opening in the impression tray where the impression coping can be accessed.
10. Take an open tray impression of the implant along with the other prepared teeth.
11. Unscrew the fixture level impression coping and lift out the impression when ready.
12. Screw temporary crown restoration back on.
13. Send case to Haupt Dental Lab
14. Haupt Lab to make custom abutment and crown.

Please give us a call if you have any questions.



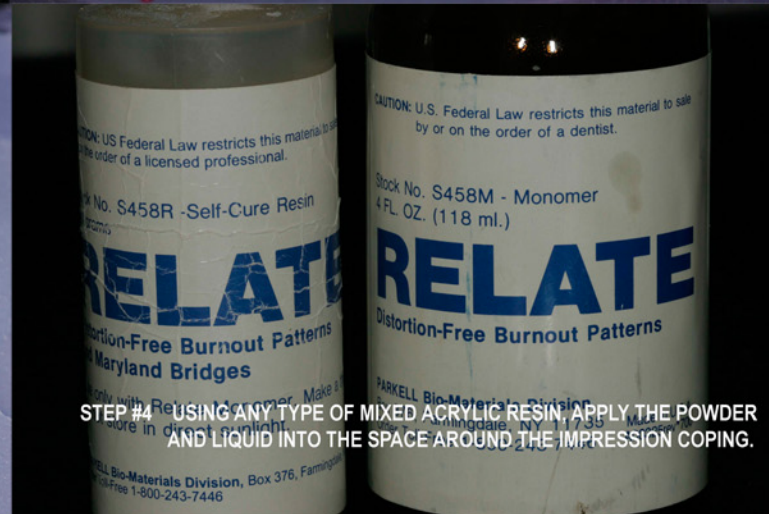
STEP#1 SCREW ANALOG TO TEMPORARY AND PLACE IN MEDIUM BODY IMPRESSION MATERIAL



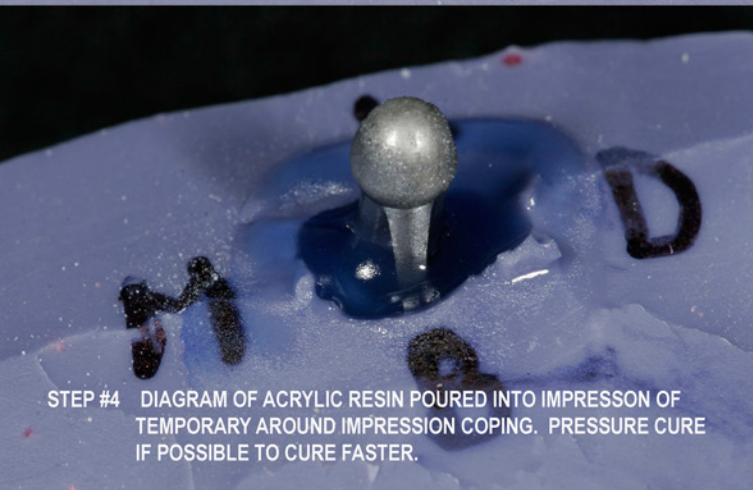
STEP #2 TRIM IMPRESSION MATERIAL AROUND THE TEMPORARY WITH SHARP BLADE TO REMOVE EXCESS. TRIM TO APROX THE GING-BODY 1/3



STEP #3 SCREW IMPRESSION COPING INTO ANALOG THAT IS LOCKED INSIDE THE IMPRESSION MATERIAL UNTIL FIRM. TAKE CARE NOT TO TURN TO HARD THAT THE ANALOG ROTATES INSIDE.



STEP #4 USING ANY TYPE OF MIXED ACRYLIC RESIN, APPLY THE POWDER AND LIQUID INTO THE SPACE AROUND THE IMPRESSION COPING.



STEP #4 DIAGRAM OF ACRYLIC RESIN POURED INTO IMPRESSION OF TEMPORARY AROUND IMPRESSION COPING. PRESSURE CURE IF POSSIBLE TO CURE FASTER.



STEP #5 REMOVE IMPRESSION COPING FROM IMPRESSION MATERIAL TAKE CARE TO MARK THE POSITION BUC, LING, MES, DIS.

FINISHED MODIFIED IMPRESSION COPING SHOULD RESEMBLE THIS

